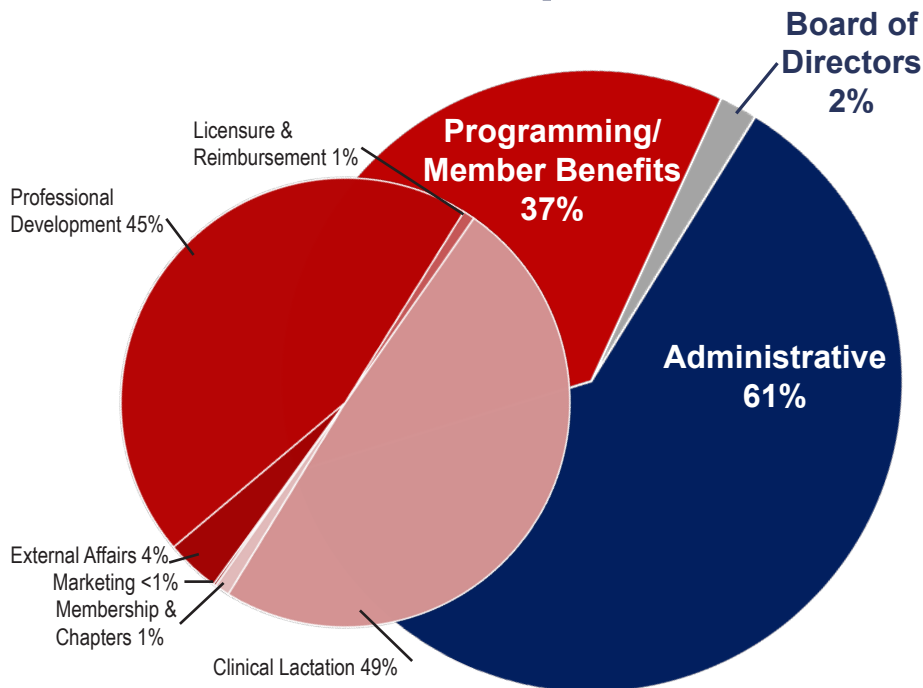


2018 USLCA Financial Summary

Did you ever wonder if your membership really makes a difference? USLCA's expenses are broken into fixed expenses (what it takes to run the organization) and flexible expenses (extra projects that expand the value of membership).

As revenue increases, more dollars become available for these special projects and our impact is more meaningful. Your membership really does count!

Expenses



Board of Directors

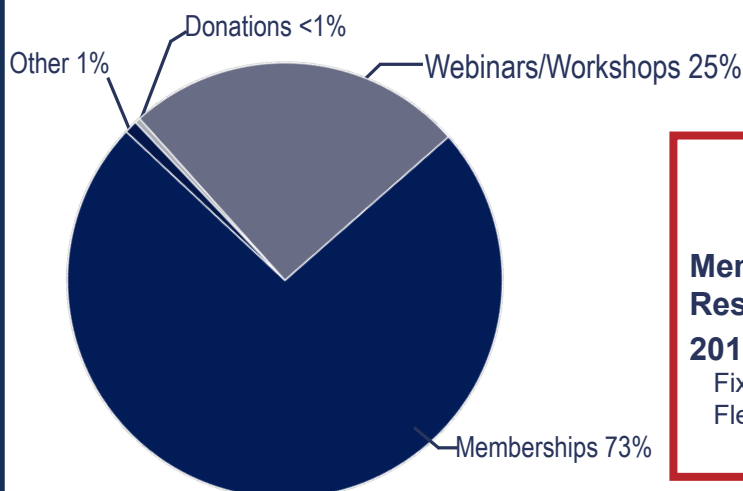
Travel for annual board meetings

Programming

Membership & Chapters
 Annual Awards
 Chapter Printing
 Clinical Lactation
 Journal Editor & Publisher
 Licensure & Reimbursement
 Licensure grants
 Advocacy and Outreach
 Professional Development
 Webinar Software
 Providership Fees
 Regional Workshops
 External Affairs
 Participation in national forums
 Marketing
 Marketing plans
 Promotional items

Administrative

Membership Database
 Website
 Legal and Accounting Services
 Employee Salaries
 Operations



Income

2019 At a Glance

Membership: 2500 Members
Reserves: \$192,000
2018 Budget Total: \$353,000
 Fixed Expenses \$225,000
 Flexible Expenses \$128,000

