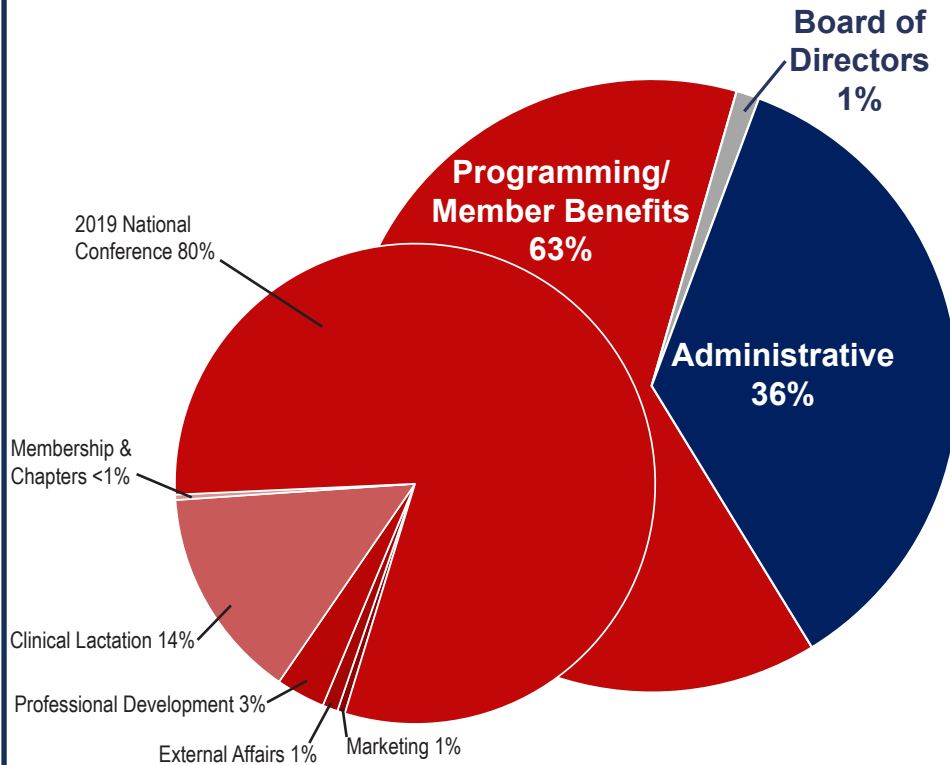


2019 USLCA Financial Summary

Did you ever wonder if your membership really makes a difference? USLCA's expenses are broken into fixed expenses (what it takes to run the organization) and flexible expenses (extra projects that expand the value of membership).

As revenue increases, more dollars become available for these special projects and our impact is more meaningful. Your membership really does count!

Expenses



Board of Directors

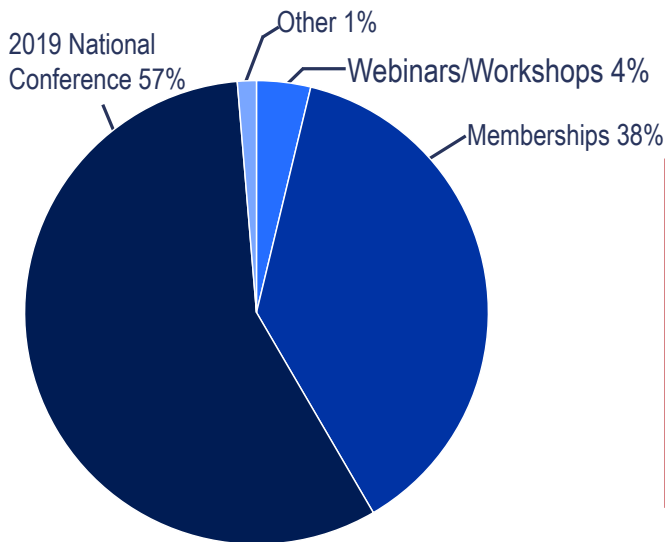
Travel for annual board meetings

Programming

- Membership & Chapters
 - Annual Awards
 - Chapter Printing
- Clinical Lactation
 - Journal Editor & Publisher
- Professional Development
 - Webinar Software
 - Providership Fees
 - Regional Workshops
 - Speaker fees
- External Affairs
 - Participation in national forums
- Marketing
 - Marketing plans
 - Promotional items
- National Conference

Administrative

- Membership Database
- Website
- Legal and Accounting Services
- Employee Salaries
- Operations



Income

2020 At a Glance

Membership: 2300 Members
Reserves: \$104,000
2020 Budget Total: \$328,000
 Fixed Expenses \$241,000
 Flexible Expenses \$87,000

