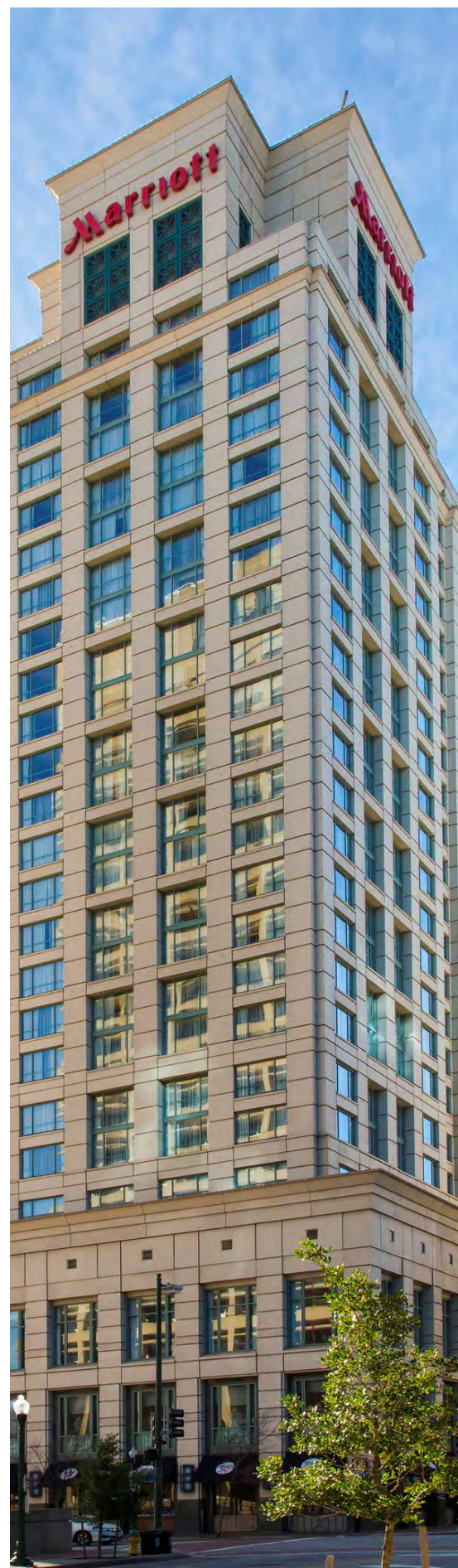


SCHEDULE

DAY	TIME	SESSION	CEUs
THURSDAY 22ND Clinical Day Add-On 6 CERPs	7:00-8:00AM	Breakfast	
	8:00-9:30AM	Clinical Sessions	1.5
	10:00-11:30AM	Clinical Sessions	1.5
	11:30AM-12:30PM	Lunch	
	12:30-2:00PM	Clinical Sessions	1.5
	2:30-4:00PM	Clinical Sessions	1.5
	5:00-6:00	Plenary Session	1
	6:00-8:00PM	Exhibitor Reception	
FRIDAY 23RD 6.5* CERPs	7:00-8:30AM	Coffee w/ Exhibitors	
	7:30-8:30AM	Early Bird Breakout	1
	8:30-10:30AM	Breakfast Plenary	1.5
	11:00AM-12:00PM	Breakout Session	1
	12:00-2:00PM	Exhibits/SIG/Networking	
	1:00-2:00PM	Lunch	
	2:00-3:00PM	Breakout Session	1
	3:30-6:30PM	Movie: Private Viewing	2
SATURDAY 24TH 6.5* CERPs	7:00-8:00AM	Early Bird Breakout	1
	7:00-9:00AM	Exhibits	
	8:00-9:00AM	Breakfast	
	9:00-10:00AM	Breakout Session	1
	10:10-11:10AM	Breakout Session	1
	11:10AM-12:30PM	Exhibits	
	12:00-1:00PM	Lunch	
	1:00-2:00PM	Breakout Session	1
	2:15-3:15PM	Breakout Session	1
	3:45-5:45PM	Closing Plenary	1.5



*Maximum CERPs earned during in-person sessions